



# SPREADSHEET SERVER

FOR USE WITH SAGE® ERP

**Are you currently preparing your analysis and reports for Sage® ERP in Microsoft® Excel? Would you like to automate your Excel processes using data from your Sage GL and other modules?**

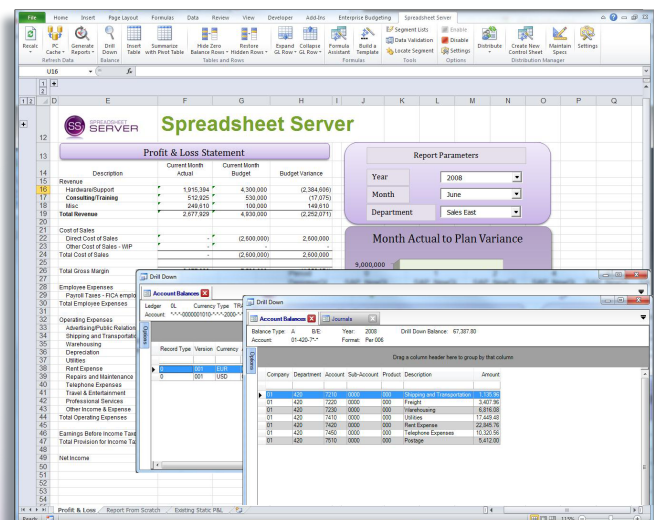
Spreadsheet Server, Powered by the QueryExchange™ works as an intuitive Microsoft® add-in providing live reporting and analysis from Sage into Excel. This empowers end users with the ability to use familiar Excel features and functions to create custom dynamic dashboard views from Sage. These views can be accessed, automated and presented with our formula driven methodology, including summary balances and detailed drill-downs. The cloud-based QueryExchange™ component of Spreadsheet Server enables user organizations to select and tailor pre-built queries to meet their specific needs.

In addition, Spreadsheet Server has the ability to dynamically access the following modules: Accounts Receivable, Accounts Payable, Cash Management, General Ledger, Manufacturing, and many more.

## Benefits include:

- Live access to Sage data from Excel
- FRx Replacement Solution, including integrated reporting beyond the GL
- No more downloading or re-keying/exporting of Sage balance or transaction level data
- Eliminate requirement for IT or super-users to create/change reports
- No staging areas or data warehousing needed
- Connect-ability from Excel to multiple data sources across different platforms
- The cloud-based QueryExchange™ allows the Sage user community to share pre-configured queries
- Drill-down to detail from your spreadsheets
- Ability to create any custom queries within Sage or any other relational database
- View results directly in your spreadsheet, or analyze results with enhanced drill-down capabilities
- Enhanced data analysis leveraging new features in Excel 2010, such as tables, pivot reports and charts
- Increase efficiency and timeliness of your budgeting process

ESS



**Excel-Based Automation Application for use with Sage® (MAS® 90, MAS® 200, MAS® 500)**

# SPREADSHEET SERVER FEATURES & BENEFITS

## Dynamic Balances

Retrieve dynamic period, year-to-date, life-to-date and quarter balances using simple Excel formulas. Formula wizard is available to assist Sage users in creating new formula expressions. Segment descriptions can also be retrieved for single accounts.

## Account Combinations

Use wild cards, ranges, or segment lists to retrieve any combination of accounts into a single spreadsheet row. Segment Lists are user defined combinations of segments that are set at the local level or can be shared among multiple users.

## Drill Down Capabilities

Dynamic drill down capabilities allow for review of detailed account balances and journal entry information. Combine your reporting with account analysis to achieve more efficient analysis of your key data.

## Distribution Manager

Automate the distribution process of your reports by using Distribution Manager Utility within Spreadsheet Server. Print or email your reports, all with the click of a button.

## The QueryExchange™

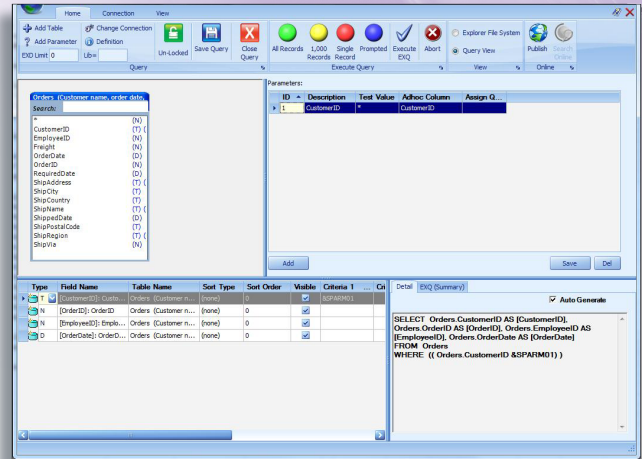
Spreadsheet Server users have full access to Global's cloud-based QueryExchange™, a query repository shared by users around the globe. With intuitive search capabilities, users can immediately see, download and use queries built by their fellow Sage users directly in Microsoft® Excel.

## Security Features

Spreadsheet Server uses user-defined security as outlined in your Sage application.

## Streamlined Installation

Spreadsheet Server is deployed using Global's *Quick-Start* Installation Methodology.



## Report Examples Include:

- Balance Sheets
- Income Statements
- Sales Reporting
- Budget Forecasting
- Customer Open Order
- Equal Employment Opportunity Reporting
- Project Management Reporting
- Purchase Order Tracking
- Business KPI and Role-Specific Dashboards

## Want to learn more?

## Contact us today.

Essential Finance  
Unit 17  
Newlands House  
Newlands Science Park  
Hull  
HU6 7TQ  
United Kingdom

Phone: +44 (0) 1482 854 222

Fax: +44 (0) 1482 801 548

E-mail: [solutions@essentialfinance.net](mailto:solutions@essentialfinance.net)

Web: [www.essentialfinance.net](http://www.essentialfinance.net)